

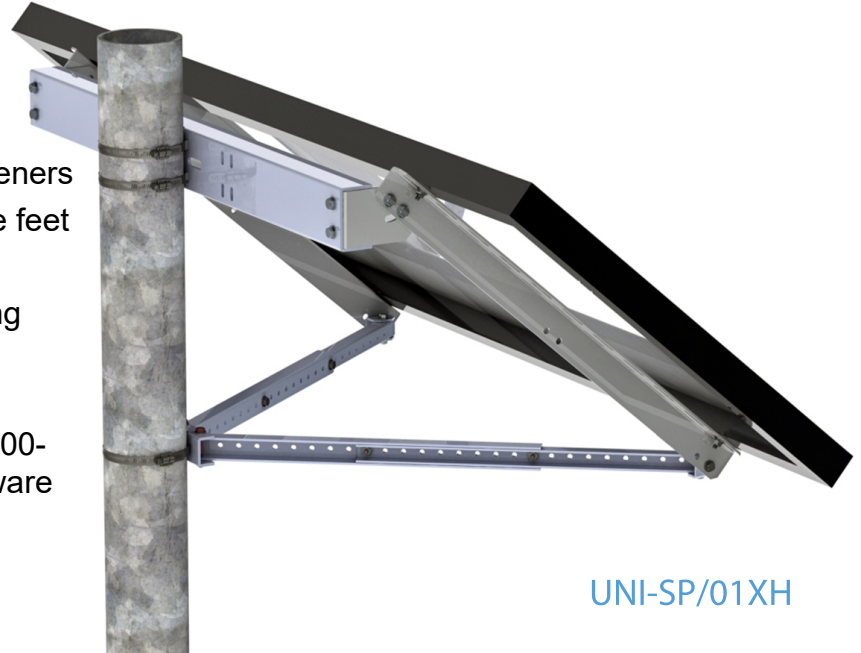


Tamarack Solar
Products

SIDE OF POLE MOUNT UNI-SP/01XH

Industry Standard for Over 20 Years

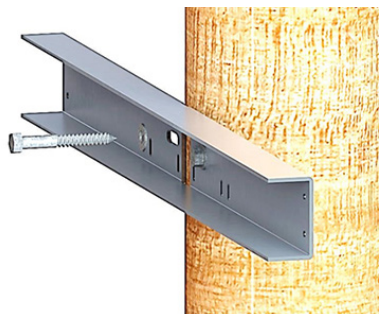
- Fits pole diameters of 2-inch to 4.5-inch
- Mount on larger poles, Rohn 25-series towers, or flat surfaces with additional fasteners
- Maximum module surface area is 7 square feet
- Maximum module width is 27.5-inches
- Fits modules with center to center mounting hole spacing of 29.2-inches to 39.0-inches
- Tilt angle can be adjusted from 30° to 60°
- Manufactured using corrosion-resistant 5000-series aluminum with stainless-steel hardware
- Designed to withstand 90 MPH wind.
- In stock for immediate shipment



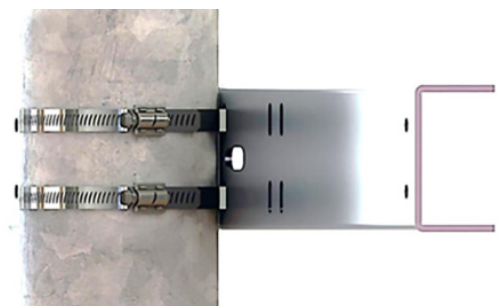
UNI-SP/01XH

Optional User Supplied Components for Alternative Mounting Methods

Flat wood surface or large wood pole use two 3-inch long, or longer ½-inch lag bolts with flat washers



Poles larger than 4.5 inch in diameter use Breeze Power-Seal series 63000 hose clamps with the appropriate diameter for the pole .



Extremely high wind locations use two ½ inch -13 U-bolts for 2, 3 or 4-inch pipe

