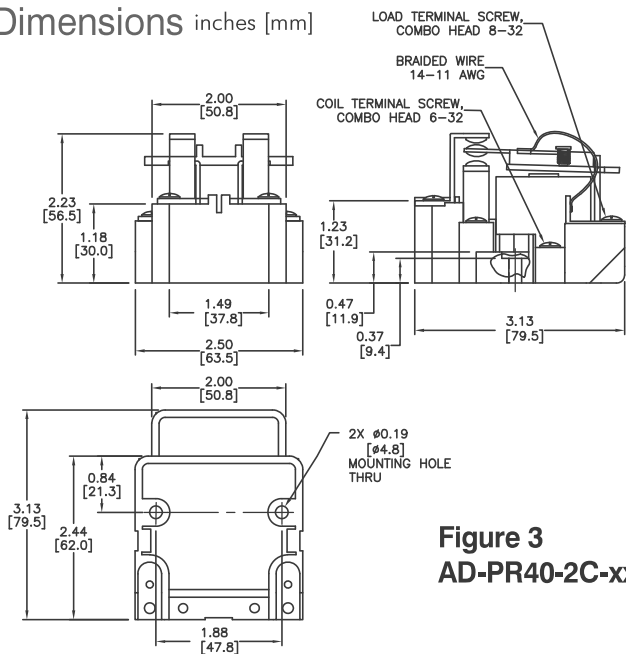


# Power Relays Specifications

Power Relays Specification Table															
Part Numbers	AD-PR40-1C-12D	AD-PR40-1C-24D	AD-PR40-1C-24A	AD-PR40-1C-120A	AD-PR40-1C-240A	AD-PR40-2A-12D	AD-PR40-2A-24D	AD-PR40-2A-24A	AD-PR40-2A-120A	AD-PR40-2A-240A	AD-PR40-2C-12D	AD-PR40-2C-24D	AD-PR40-2C-24A	AD-PR40-2C-120A	AD-PR40-2C-240A
<b>General Specifications</b>															
<b>Service Life</b>	Mechanical: 1 million operations AC and DC Electrical (resistive): 50,000 operations @ 300VAC; 100,000 @ 28VDC														
<b>Operating Temperature</b>	-55°C to 55°C (-67°F to 131°F)														
<b>Response Time</b>	30ms														
<b>Weight</b>	227g ( 8oz) to 312g (11oz)														
<b>Agency Approvals and Standards</b>	UL Recognized E191059, CE Certified (9667186-9811), CSA Certified 244610, RoHS														
<b>Environmental Protection</b>	Not applicable to open relays														
<b>Pilot Duty</b>	A600														
<b>Terminal Wire</b>	Max 10AWG														
<b>Terminal Torque</b>	11 to 15 in-lb (1.2 to 1.7 N-m)														
<b>Coil Specifications</b>															
<b>Coil Input Voltage</b>	12VDC	24VDC	24VAC 50/60 Hz	120VAC 50/60 Hz	240VAC 50/60 Hz	12VDC	24VDC	24VAC 50/60 Hz	120VAC 50/60 Hz	240VAC 50/60 Hz	12VDC	24VDC	24VAC 50/60 Hz	120VAC 50/60 Hz	240VAC 50/60 Hz
<b>Coil Resistance</b>	70Ω	290Ω	12Ω	290Ω	1.2 kΩ	70Ω	290Ω	12Ω	290Ω	1.2 kΩ	70Ω	290Ω	12Ω	290Ω	1.2 kΩ
<b>Power Consumption</b>	10VA (AC) , 4.0 W DC														
<b>Dropout Voltage (% of rated voltage)</b>	Min. 10%														
<b>Pull-in Voltage</b>	Max. 85% of nominal voltage or less AC, Max. 80% of nominal voltage or less DC														
<b>Max. Voltage (continuous voltage)</b>	110% of the rated coil voltage														
<b>Contact Specifications</b>															
<b>Contact Type</b>	SPDT				DPST (N.O.)				DPDT						
<b>Contact Material</b>	Silver Alloy, gold flashed														
<b>Contact Rating</b>	40A, 300 VAC / 28 VDC 5A, 480 / 600 VAC 2hp each pole 120-600 VAC 2hp sw. 2 poles 120-600 VAC 15A TUNG. 120 VAC														
<b>Minimum Switching Requirement</b>	1A @ 5VAC/VDC														
<b>Maximum Switching Voltage</b>	600V														
<b>Dielectric Strength Between Contacts</b>	Between coil and contact: 2200V ; Between poles: 2200V ; Between open contacts: 1500V														

## Dimensions inches [mm]



**Figure 3**  
**AD-PR40-2C-xx**