

REVISIONS		
REV	DESCRIPTION	DATE

MATERIAL

FINISH

DRAWING INTERPRETATIONS	
PROJECTIONS	DIMENSIONS
	INCHES  MILLIMETERS 

UNSPECIFIED TOLERANCES  
DECIMALS ±.020 (±.510 mm); ANGULAR ±1°

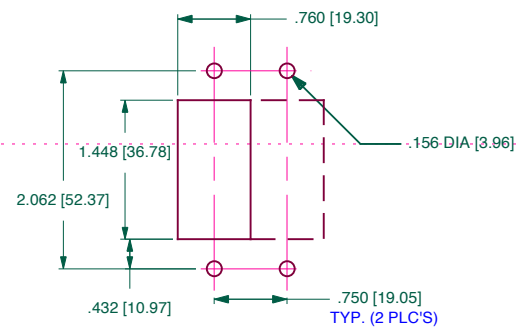
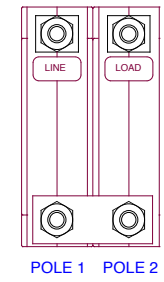
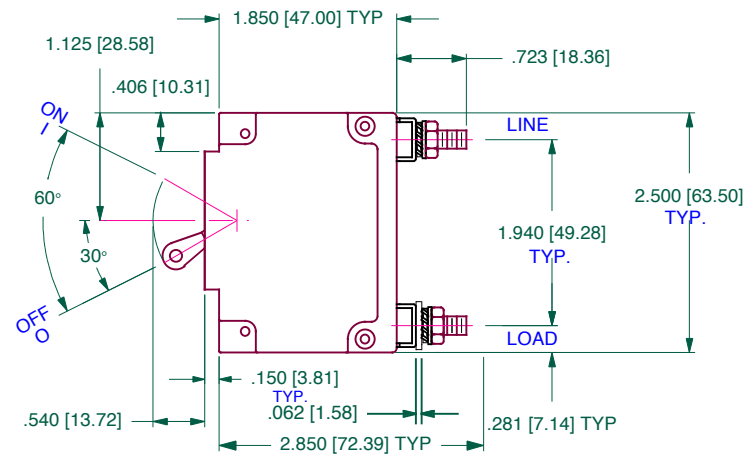
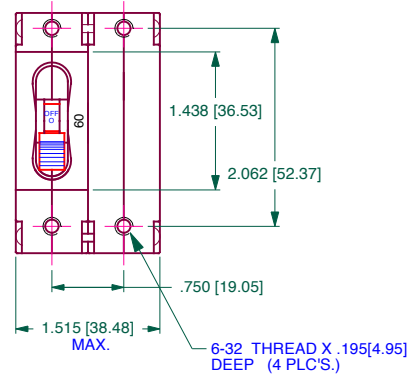
DRAWN BY: <b>MM</b> <b>4-18-13</b>	CHECKED BY:	SCALE <b>NONE</b>
APPROVED BY:	DATE APPROVED	

**DO NOT SCALE DRAWING**

TITLE  
**"C SERIES"  
CIRCUIT BREAKER**

**Carling Technologies**  
CIRCUIT BREAKER DIVISION  
PLAINVILLE, CT

SIZE <b>B</b>	DRAWING NO. <b>CB2-X0-19-009-X21-XA</b>	REV <b>01</b>
SHEET 1 OF 1		

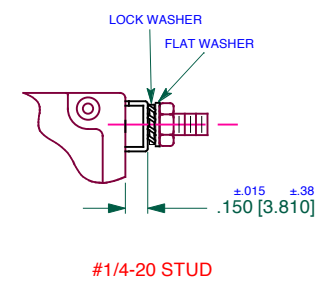


**PANEL CUTOUT DETAIL**  
TOLERANCES ±.005 [.12]

**LABEL INFORMATION:**

P C GPA V HZ TD  
1-2 B0 60.0 300 DC 14  
Series connected

**TERMINAL DIMENSIONAL DETAIL**



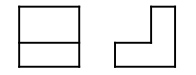
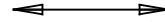

CONTROL SYMBOLS	
	<b>CRITICAL</b>
	<b>MAJOR</b>

TOOL NO.	REV
REFERENCE NO.	
SHEET	OF

REVISIONS		
REV	DESCRIPTION	DATE

MATERIAL

FINISH

DRAWING INTERPRETATIONS	
PROJECTIONS	DIMENSIONS
	INCHES  MILLIMETERS 

UNSPECIFIED TOLERANCES  
 DECIMALS ±.020 (±.510 mm); ANGULAR ±1°

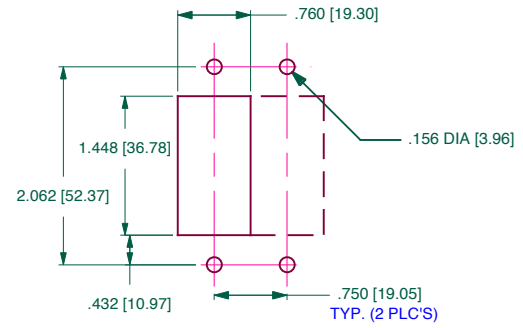
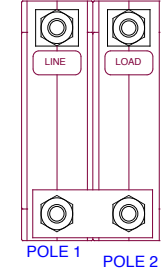
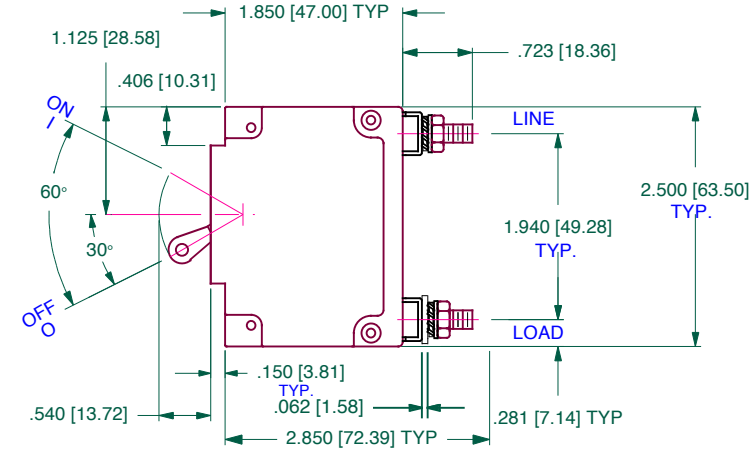
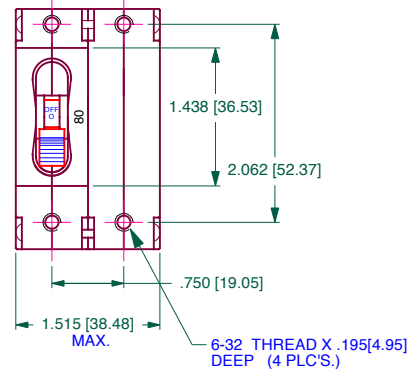
DRAWN BY: <b>MM</b>	CHECKED BY: <b>ME</b>	SCALE <b>NONE</b>
<b>6-25-10</b>	<b>6-25-10</b>	
APPROVED BY: <b>ECKELS</b>	DATE APPROVED <b>6-25-10</b>	

**DO NOT SCALE DRAWING**

TITLE  
**"C SERIES"  
 CIRCUIT BREAKER**



SIZE <b>B</b>	DRAWING NO. <b>CB2-X0-18-255-X11-XA</b>	REV <b>01</b>
------------------	--	------------------

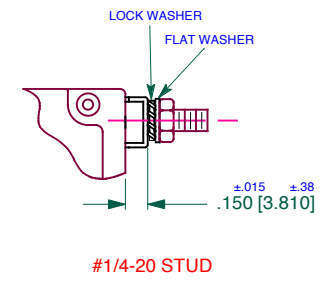




**PANEL CUTOUT DETAIL**  
 TOLERANCES ±.005 [.12]

**LABEL INFORMATION:**

P C GPA V HZ TD  
 1-2 B0 80.0 300 DC 14  
 Series connection

**TERMINAL DIMENSIONAL DETAIL**



CONTROL SYMBOLS	
	<b>CRITICAL</b>
	<b>MAJOR</b>

TOOL NO.	REV
REFERENCE NO.	
SHEET	OF